

FEDERAL ENERGY REGULATORY COMMISSION

Washington, DC 20426

February 13, 2024

OFFICE OF ENERGY PROJECTS

Project No. 943-144 – Washington
Rock Island Hydroelectric Project
Public Utility District No. 1 of Chelan
County

VIA FERC Service

Reference: Scoping Document 1 for the Rock Island Hydroelectric Project, P-943-144

To the Parties Addressed:

The Federal Energy Regulatory Commission (Commission) is currently reviewing the Pre-Application Document, filed on December 15, 2023, by Public Utility District No. 1 of Chelan County (Chelan PUD) for relicensing the Rock Island Hydroelectric Project No. 943 (Rock Island Project or project). The project is located on the Columbia River, in Chelan and Douglas Counties, Washington.

Pursuant to the National Environmental Policy Act (NEPA) of 1969, as amended, Commission staff will prepare either an environmental assessment (EA) or an environmental impact statement (EIS) (collectively referred to as the “NEPA document”), which will be used by the Commission to determine whether, and under what conditions, to issue a new license for the project. To support and assist our environmental review, we are beginning the public scoping process to ensure that all pertinent issues are identified and analyzed, and that the NEPA document is thorough and balanced. The Commission’s scoping process will satisfy the NEPA scoping requirements, irrespective of whether the Commission issues an EA or an EIS.

We invite your participation in the scoping process and are circulating the attached Scoping Document 1 (SD1) to provide you with information on the project. We are also soliciting your comments and suggestions on our preliminary list of issues and alternatives to be addressed in the NEPA document. We are also requesting that you identify any studies that would help provide a framework for collecting pertinent

Project No. 943-144

information on the resource areas under consideration and necessary for the Commission to prepare the NEPA document for the project.

We will hold two scoping meetings for the project to receive input on the scope of the NEPA document. An evening scoping meeting will be held at 7:00 p.m. Pacific Daylight Time (PDT) on March 13, 2024, at Confluence Technology Center in Wenatchee, Washington. A daytime scoping meeting will be held at 9:00 a.m. PDT on March 14, 2024, at the same location. We will also visit the Rock Island Project facilities on March 13, 2024, starting at 11:45 a.m. PDT.

We invite all interested agencies, Indian tribes, non-governmental organizations, and individuals to attend one or both of these meetings and participate in the environmental site visit. Further information on the scoping meetings and environmental site review is available in the enclosed SD1.

SD1 is being distributed to both Chelan PUD's distribution list and the Commission's official mailing list (see section 9.0, *Mailing List*, of the attached SD1). If you wish to be added to or removed from the Commission's official mailing list, please send your request by email to FERCOnlineSupport@ferc.gov. In lieu of an email request, you may submit a paper request. Submissions sent via the U.S. Postal Service must be addressed to: Debbie-Anne A. Reese, Acting Secretary, Federal Energy Regulatory Commission, 888 First Street, N.E., Room 1A, Washington, DC 20426. Submissions sent via any other carrier must be addressed to: Debbie-Anne A. Reese, Acting Secretary, Federal Energy Regulatory Commission, 12225 Wilkins Avenue, Rockville, Maryland 20852. All written or emailed requests must specify your wish to be added to, or removed from, the mailing list, and must clearly identify the following on the first page: **Rock Island Hydroelectric Project (P-943-144)**.

Please review the SD1 and, if you wish to provide comments, follow the instructions in section 6.0, *Request for Information and Studies*. If you have any questions about SD1, the scoping process, or how Commission staff will develop the NEPA document for this project, please contact Matt Cutlip at (503)-552-2762 or matt.cutlip@ferc.gov. Additional information about the Commission's licensing process and the project may be obtained from our website, www.ferc.gov. The deadline for filing comments is **April 15, 2024**. The Commission strongly encourages electronic filings.

Enclosure: Scoping Document 1

SCOPING DOCUMENT 1

ROCK ISLAND HYDROELECTRIC PROJECT
(FERC NO. 943-144)

WASHINGTON



Federal Energy Regulatory Commission
Office of Energy Projects
Division of Hydropower Licensing
Washington, DC

February 2024

TABLE OF CONTENTS

1.0 INTRODUCTION	1
2.0 SCOPING	3
2.1 PURPOSES OF SCOPING	3
2.2 COMMENTS, SCOPING MEETINGS, AND ENVIRONMENTAL SITE REVIEW	4
3.0 PROPOSED ACTION AND ALTERNATIVES.....	6
3.1 NO-ACTION ALTERNATIVE	6
3.1.1 Project Area	7
3.1.2 Existing Project Facilities.....	7
3.2 APPLICANT'S PROPOSAL	9
3.2.1 Proposed Operation.....	9
3.2.2 Proposed Environmental Measures	10
3.3 PROJECT SAFETY	10
3.4 ALTERNATIVES TO THE PROPOSED ACTION.....	11
3.5 ALTERNATIVES CONSIDERED BUT ELIMINATED FROM DETAILED STUDY	11
3.5.1 Federal Government Takeover.....	11
3.5.2 Non-power License.....	12
3.5.3 Project Decommissioning	12
4.0 SCOPE OF CUMULATIVE EFFECTS AND SITE-SPECIFIC RESOURCE ISSUES	13
4.1 CUMULATIVE EFFECTS	13
4.1.1 Resources that could be Cumulatively Affected.....	13
4.1.2 Geographic Scope.....	13
4.1.3 Temporal Scope	14
4.2 RESOURCE ISSUES	14
4.2.1 Aquatic Resources.....	14
4.2.2 Terrestrial Resources.....	15
4.2.3 Threatened and Endangered Species.....	15
4.2.4 Recreation and Land Use	15
4.2.5 Environmental Justice	16
4.2.6 Cultural Resources.....	16
5.0 PROPOSED STUDIES	16
6.0 REQUEST FOR INFORMATION AND STUDIES	17

Project No. 943-144

7.0 CURRENT PROCESSING SCHEDULE	19
8.0 COMPREHENSIVE PLANS	19
9.0 MAILING LISTS.....	23

APPENDIX A – STUDY PLAN CRITERIA

APPENDIX B – PROCESS PLAN AND SCHEDULE

LIST OF FIGURES

Figure 1: Location of the Rock Island Project (Source: PAD).....	2
Figure 2: Rock Island Project Works (Source: PAD).....	8

LIST OF TABLES

Table 1. Chelan PUD’s initial study proposals for the Rock Island Project. (Source: PAD)	16
---	----

SCOPING DOCUMENT 1

Rock Island Hydroelectric Project (FERC No. 943-144)

1.0 INTRODUCTION

The Federal Energy Regulatory Commission (Commission or FERC), under the authority of the Federal Power Act (FPA),¹ may issue licenses for terms ranging from 30 to 50 years for the construction, operation, and maintenance of non-federal hydroelectric projects. On December 15, 2023, Public Utility District No. 1 of Chelan County, Washington (Chelan PUD) filed a notice of intent (NOI) and a pre-application document (PAD) for a new license for the Rock Island Hydroelectric Project (FERC No. 943-144) (Rock Island Project or project).²

The project is located on the Columbia River near the city of Wenatchee in Chelan and Douglas Counties, Washington (Figure 1). The project has a total installed generating capacity of 395.72-megawatts (MW). The project's average annual energy production for 1993-2022 period was 2,556,952 megawatt-hours (MWh). The project occupies federal land administered by the U.S. Bureau of Land Management. A detailed description of the project is provided in section 3.0.

The National Environmental Policy Act (NEPA) of 1969,³ the Commission's regulations, and other applicable laws require that we independently evaluate the environmental effects of licensing the project as proposed and consider reasonable alternatives to the proposed action. We will prepare either an environmental assessment (EA) or an environmental impact statement (EIS) (collectively referred to as the "NEPA document") that describes and evaluates the probable effects, including an assessment of the site-specific and cumulative effects, if any, of the proposed action and alternatives. The Commission's scoping process will help determine the required level of analysis and satisfy the NEPA scoping requirements, irrespective of whether the Commission issues an EA or an EIS.

¹ 16 U.S.C. § 791(a)-825(r).

² The current license for the Rock Island Project was issued with an effective date of January 1, 1989, for a term of 40 years and expiring on December 31, 2028.

³ 42 U.S.C. §§ 4321-4370(f).

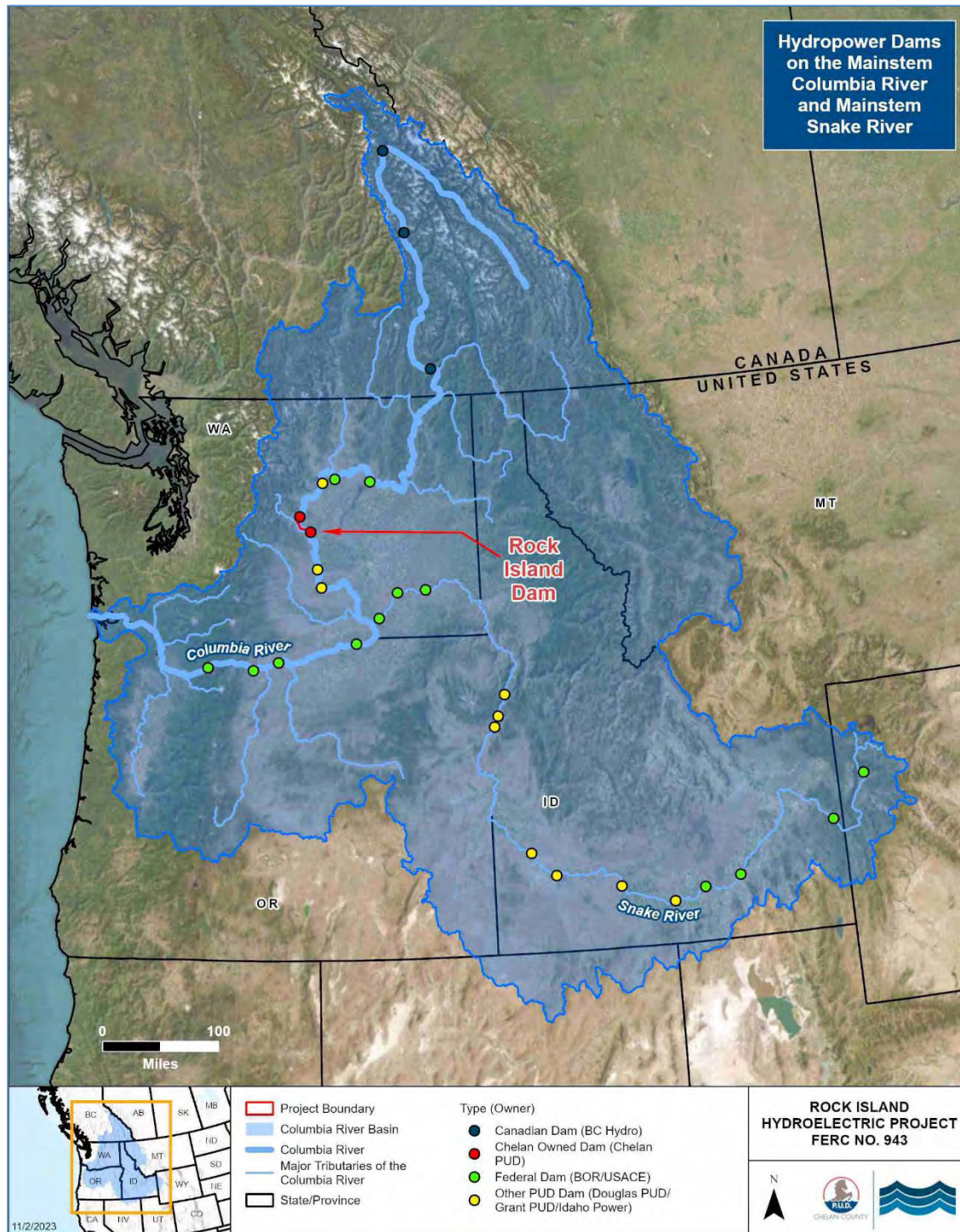


Figure 1: Location of the Rock Island Project (Source: PAD).

2.0 SCOPING

This Scoping Document 1 (SD1) is intended to advise all participants as to the potential scope of the NEPA documentation and to seek additional information pertinent to this analysis. This document contains: (1) a description of the scoping process and development of the license application, (2) a description of the proposed action and alternatives to the proposed action, (3) a preliminary identification of environmental issues, and (4) a preliminary list of comprehensive plans that are applicable to the project.

2.1 PURPOSES OF SCOPING

Scoping is the process used to identify issues, concerns, and opportunities for enhancement or mitigation associated with a proposed action. According to NEPA, the process should be conducted early in the planning stage of the project. The purposes of the scoping process are as follows:

- invite participation of federal, state and local resource agencies, Indian tribes, non-governmental organizations (NGOs), and the public to identify significant environmental and socioeconomic issues related to the proposed project;
- determine the resource issues, depth of analysis, and significance of issues to be addressed in the NEPA document;
- identify how the project would or would not contribute to cumulative effects in the project area;
- identify reasonable alternatives to the proposed action that should be evaluated in the NEPA document;
- solicit available information on the resources at issue and study needs; and
- determine the resource areas and potential issues that do not require detailed analysis during review of the project.

2.2 COMMENTS, SCOPING MEETINGS, AND ENVIRONMENTAL SITE REVIEW

During preparation of the NEPA document, there will be several opportunities for the resource agencies, Indian tribes, NGOs, and the public to provide input. These opportunities will occur:

- during the public scoping process and study plan meetings, when we solicit oral and written comments regarding the scope of issues and analysis for the NEPA document;
- in response to the Commission's notice that the project is ready for environmental analysis; and
- after issuance of the NEPA document when we solicit written comments on the document.

In addition to written comments solicited by this SD1, we will hold two public scoping meetings and an environmental site review near the project. A daytime meeting will focus on concerns of the resource agencies, Indian tribes, and NGOs, and the evening meeting will focus on receiving input from the public. We invite all interested agencies, Indian tribes, NGOs, and the public to attend one or both meetings to assist us in identifying the scope of environmental issues that should be analyzed in the NEPA document. All interested parties are also invited to participate in the environmental site review. The times and locations of the meetings and environmental site review are as follows:

On-Site Environmental Site Review

DATE: Wednesday, March 13, 2024

TIME: 11:45 a.m. – 4:00 p.m. Pacific Daylight Time (PDT)

LOCATION: Former Chelan PUD Headquarters building parking lot, 321 N. Wenatchee Ave., Wenatchee, WA 98801

The site review will begin at the parking lot for the former Chelan PUD Headquarters and will visit several additional locations to view the Rock Island Project. Bus transportation will be provided during the site visit for registered participants. Please contact Janel Ulrich with Chelan PUD at (609) 661-4400, or via email at Janel.Ulrich@chelanpud.org, on or before March 1, 2024, if you plan to attend the site review.

Evening Scoping Meeting

DATE: Wednesday, March 13, 2024

TIME: 7:00 p.m. – 10:00 p.m. PDT

LOCATION: Confluence Technology Center - Quad Room

ADDRESS: 285 Technology Center Way, Wenatchee, WA 98801

Daytime Scoping Meeting

DATE: Thursday, March 14, 2024

TIME: 9:00 a.m. – 12:00 p.m. PDT

LOCATION: Confluence Technology Center - Quad Room

ADDRESS: 285 Technology Center Way, Wenatchee, WA 98801

Commission staff will moderate the scoping meetings. The meetings will begin promptly at their respective start times listed above. At the start of each meeting, staff will provide further instructions regarding the meeting setup, agenda, and how participants can provide their comments and questions during the meeting. The scoping meetings will be recorded by a court reporter, and all statements will become part of the Commission's public record for the project. Oral comments will initially be limited to 5 minutes in duration. Interested parties who choose not to speak or who are unable to attend the scoping meetings may provide written comments and information to the Commission as described in section 6.0, *Request for Information and Studies*. These meetings are posted on the Commission's calendar located on the internet at <https://www.ferc.gov/news-events/events> along with other related information. Click on the "Scoping Meeting" link on the left side of the page.

Project No. 943-144

Please note, that if no participants join the meetings within 30 minutes after the start time, staff will end the meeting. The meetings will end after participants have commented or at the specified end time (listed above), whichever occurs first.

Meeting participants should be prepared to discuss their issues and/or concerns as they pertain to the licensing of the Rock Island Project. It is advised that participants review the PAD to prepare for the scoping meetings. Copies of the PAD may be viewed on the Commission's website (www.ferc.gov), using the "eLibrary" link. Enter the docket number, P-943 to access the document. For assistance, contact FERC Online Support at FERCOnlineSupport@ferc.gov or toll free at 1-866-208-3676, or for TTY, (202) 502-8659.

Following the scoping meetings and comment period, all issues raised will be reviewed and decisions made as to the level of analysis needed. If preliminary analysis indicates that any issues presented in this scoping document have little potential for causing significant effects, the issue(s) will be identified and the reasons for not providing a more detailed analysis will be given in the NEPA document.

If we receive no substantive comments on SD1, then we will not prepare a Scoping Document 2 (SD2). Otherwise, we will issue SD2 to address any substantive comments received. The SD2 will be issued for informational purposes only; no response will be required. The NEPA document will address recommendations and input received during the scoping process.

3.0 PROPOSED ACTION AND ALTERNATIVES

In accordance with NEPA, the environmental analysis will consider the following alternatives, at a minimum: (1) the no-action alternative, (2) Chelan PUD's proposed action, and (3) alternatives to the proposed action.

3.1 NO-ACTION ALTERNATIVE

Under the no-action alternative, the Rock Island Project would continue to operate as required by the current project license (i.e., there would be no change to the existing environment). No new environmental protection, mitigation, or enhancement measures would be implemented. We use this alternative to establish baseline environmental conditions for comparison with other alternatives.

3.1.1 Project Area

The Rock Island Project is located at about river mile 453 on the Columbia River, near the city of Wenatchee, Washington. The project is the seventh hydroelectric development on the mainstem of the Columbia River. The drainage area of the Columbia River at the project is about 89,400 square miles.

3.1.2 Existing Project Facilities

The major project facilities include a dam with integral powerhouses and spillways, several miles of transmission lines, a fish hatchery, and numerous recreation facilities. Major project works are shown on figure 2.

Rock Island Dam is a 3,580-foot-long reinforced concrete gravity dam that consists of the following sections, from left to right facing downstream: (1) a left bank upstream fishway; (2) a 110-foot-high, 870-foot-long powerhouse (Powerhouse 1) containing 10 vertical-axis turbines with a total installed generating capacity of 173.20 MW, and one additional turbine providing station service; (3) a 1,184-foot-long overflow spillway section containing 32 bays, each 30 feet wide separated by 7-foot-wide concrete piers; (4) an upstream fishway that passes through a central non-gated bay that divides the spillway into left and right sections containing 14 and 17 bays, respectively, each configured with vertical-lift crest gates; (5) a 135-foot-high, 470-foot-long powerhouse (Powerhouse 2) containing eight horizontal-axis turbines with a total installed generating capacity of 222.52 MW; and (6) a right bank upstream fishway. The dam also includes a downstream fish bypass and collection facility.

Rock Island Dam creates a 3,522-acre reservoir extending about 20.7 miles upstream with a useable storage capacity of approximately 12,189 acre-feet. Below the dam, the project includes a tailrace extending 3,000 feet downstream to the Wanapum Dam impoundment. Project transmission facilities include multiple 115-kilovolt transmission lines extending about 2 miles from the powerhouses to the McKenzie and Valhalla switchyards.

Along the reservoir, Chelan PUD owns and manages 1,500 acres of land with public access, including approximately 400 acres of public parks developed within the project boundary. The licensed recreation facilities consist of the Wenatchee Confluence



Figure 2: Rock Island Project Works (Source: PAD).

State Park,⁴ Walla Walla Point Park, Wenatchee Riverfront Park, Kirby Billingsley Hydro Park, and Coyote Dunes Natural Area. Chelan PUD also owns and manages the Home Water Wildlife Preserve for wildlife habitat mitigation.

The project includes the East Bank Fish Hatchery, which is located at the upstream end of Rock Island Reservoir on the east shoreline just below Rocky Reach Dam.

3.1.3 Existing Project Operation

Chelan PUD operates the Rock Island Project to generate electric energy, mitigate flood risk, maintain water quality, facilitate fish passage, and fulfill the obligations of the

⁴ The Horan Natural Area is included within the Wenatchee Confluence State Park.

Hanford Reach Fall Chinook Protection Program Agreement (Hanford Reach Agreement).⁵ The Rock Island Project has minimal storage capacity and is primarily operated as a run-of-river facility. Daily flow releases depend on Columbia River inflows which are predominantly controlled by operations at the upstream dams (e.g., Chief Joseph Dam, Grand Coulee Dam).

The combined hydraulic capacity for both Rock Island Powerhouses is approximately 220,000 cubic feet per second (cfs). During normal operations, Chelan PUD maintains reservoir elevations between 609 feet and 613 feet NGVD 29. Flows that exceed power generation and fish spill requirements are passed through the spillway. During very high flows, Chelan PUD opens additional spillway gates to reduce the reservoir elevation below normal minimum operating levels (i.e., 609 feet) and increase storage capacity. This occurs when flows exceed the 100-year flood peak discharge of about 440,000 cfs.

To provide upstream and downstream fish passage, flows are allocated to the three upstream fishways, spill bays, and turbines. For downstream juvenile fish passage, Chelan PUD provides dedicated spill in the spring and summer. This includes spilling 10 percent of the average estimated daily river flow in the spring, and 20 percent of the average daily flow in the summer. Spring spill begins no later than April 17 of each year, at which time daily spill volume is shaped to maximize the effectiveness of juvenile fish passage. Based on a large portion of juvenile fish passing Rock Island Dam through Powerhouse 2, spill gate operations are sequenced to favor using spill gates in between the middle fish ladder and Powerhouse 2.

3.2 APPLICANT'S PROPOSAL

3.2.1 Proposed Operation

Chelan PUD proposes to continue to operate the project in the same manner described above in section 3.1.3. No new or upgraded facilities, structural changes, or operational changes are proposed.

⁵ The Hanford Reach Agreement was established to protect and enhance fall Chinook salmon in the Hanford Reach of the Columbia River, located downstream of the Rock Island Project. To fulfill its obligations under the agreement, Chelan PUD states that it provides specific flow releases to protect each of the freshwater life stages of Chinook salmon in the Hanford Reach.

Chelan PUD proposes to modify the existing project boundary by: (1) adding land under the primary transmission lines and land associated with the Home Water Wildlife Preserve, and (2) removing the Rock Island Ponds area.

3.2.2 Proposed Environmental Measures

The environmental measures that are currently proposed by Chelan PUD are described below.

Aquatic Resources

- Continue to implement the Anadromous Fish Agreement and Habitat Conservation Plan (Rock Island HCP) to protect Columbia River anadromous fish species.

Terrestrial Resources

- Continue to manage the Home Water Wildlife Preserve for wildlife habitat mitigation.

Recreation and Land Use

- Continue to implement the existing off-license Shoreline Management Manual to provide a mechanism for managing the multiple resources and uses of lands and shorelines within the Rock Island project boundary.
- Continue to implement the existing Recreation Management Plan.

Cultural Resources

- Develop a Historic Properties Management Plan to manage and protect cultural resources and historic properties.

3.3 PROJECT SAFETY

It is important to note that dam safety constraints may exist and should be taken into consideration in the development of proposals and alternatives considered in the pending proceeding. For example, proposed modifications to the dam structure, such as the addition of fish passage facilities, could impact the integrity of the dam structure. As

the proposal and alternatives are developed, the applicant must evaluate the effects and ensure that the project would meet the Commission's dam safety criteria found in Part 12 of the Commission's regulations and the Engineering Guidelines (<http://www.ferc.gov/industries/hydropower/safety/guidelines/eng-guide.asp>).

The project has been operating for more than 35 years under the current license and during this time Commission staff have conducted operational inspections focusing on the continued safety of the structure, identification of unauthorized modifications, efficiency and safety of operations, compliance with the terms of the license, and proper maintenance.

3.4 ALTERNATIVES TO THE PROPOSED ACTION

Commission staff will consider and assess all alternative recommendations for operational or facility modifications, as well as protection, mitigation, and enhancement measures identified by the Commission, the agencies, Indian tribes, NGOs, and the public.

3.5 ALTERNATIVES CONSIDERED BUT ELIMINATED FROM DETAILED STUDY

At present, we propose to eliminate the following alternatives from detailed study in the NEPA document.

3.5.1 Federal Government Takeover

In accordance with § 16.14 of the Commission's regulations, a federal department or agency may file a recommendation that the United States exercise its right to take over a hydroelectric power project with a license that is subject to sections 14 and 15 of the FPA.⁶ We do not consider federal takeover to be a reasonable alternative. Federal takeover of the project would require congressional approval. While that fact alone would not preclude further consideration of this alternative, there is currently no evidence showing that federal takeover should be recommended to Congress. No party has suggested that federal takeover would be appropriate, and no federal agency has expressed interest in operating the project.

⁶ 16 U.S.C. §§ 791(a)-825(r).

3.5.2 Non-power License

A non-power license is a temporary license the Commission would terminate whenever it determines that another governmental agency is authorized and willing to assume regulatory authority and supervision over the lands and facilities covered by the non-power license. At this time, no governmental agency has suggested a willingness or ability to take over the project. No party has sought a non-power license, and we have no basis for concluding that the project should no longer be used to produce power. Thus, we do not consider a non-power license a reasonable alternative to relicensing the project.

3.5.3 Project Decommissioning

As the Commission has previously held, decommissioning is not a reasonable alternative to relicensing in most cases.⁷ Decommissioning can be accomplished in different ways depending on the project, its environment, and the particular resource needs.⁸ For these reasons, the Commission does not speculate about possible decommissioning measures at the time of relicensing, but rather waits until an applicant actually proposes to decommission a project, or a participant in a relicensing proceeding demonstrates that there are serious resource concerns that cannot be addressed with appropriate license measures and that make decommissioning a reasonable alternative.⁹ Chelan PUD does not propose decommissioning, nor does the record to date demonstrate

⁷ See, e.g., *Eagle Crest Energy Co.*, 153 FERC ¶ 61,058, at P 67 (2015); *Public Utility District No. 1 of Pend Oreille County*, 112 FERC ¶ 61,055, at P 82 (2005); *Midwest Hydro, Inc.*, 111 FERC ¶ 61,327, at PP 35-38 (2005).

⁸ In the unlikely event that the Commission denies relicensing a project or a licensee decides to surrender an existing project, the Commission must approve a surrender “upon such conditions with respect to the disposition of such works as may be determined by the Commission.” 18 C.F.R. § 6.2 (2023). This can include simply shutting down the power operations, removing all or parts of the project (including the dam), or restoring the site to its pre-project condition.

⁹ See generally *Project Decommissioning at Relicensing*; Policy Statement, FERC Stats. & Regs., Regulations Preambles (1991-1996), ¶ 31,011 (1994); see also *City of Tacoma, Washington*, 110 FERC ¶ 61,140 (2005) (finding that unless and until the Commission has a specific decommissioning proposal, any further environmental analysis of the effects of project decommissioning would be both premature and speculative).

there are serious resource concerns that cannot be mitigated if the project is relicensed; as such, there is no reason, at this time, to include decommissioning as a reasonable alternative to be evaluated and studied as part of staff's NEPA analysis.

4.0 SCOPE OF CUMULATIVE EFFECTS AND SITE-SPECIFIC RESOURCE ISSUES

4.1 CUMULATIVE EFFECTS

According to the Council on Environmental Quality's regulations for implementing NEPA (50 C.F.R. 1508.1(g)(3)), a cumulative effect is the effect on the environment that results from the incremental effect of the action when added to other past, present and reasonably foreseeable future actions, regardless of what agency (federal or non-federal) or person undertakes such other actions. Cumulative effects can result from individually minor but collectively significant actions taking place over a period of time, including hydropower and other land and water development activities.

4.1.1 Resources that could be Cumulatively Affected

Based on our review of the PAD and preliminary staff analysis, we have identified water quality and migratory fish as aquatic resources that could be cumulatively affected by the continued operation and maintenance of the Rock Island Project.

4.1.2 Geographic Scope

Our geographic scope of analysis for cumulatively affected resources is defined by the physical limits or boundaries of: (1) the proposed action's effect on the resources, and (2) contributing effects from other hydropower and non-hydropower activities within the Columbia River Basin.

We have identified the geographic scope for our cumulative effects analysis for aquatic resources to include the Columbia River from the tailrace of the Rocky Reach Project to the downstream end of the Rock Island Project tailrace (i.e., the beginning of Wanapum Dam Reservoir). We chose this geographic scope because the construction, operation, and maintenance of the project, in combination with Rocky Reach and Wanapum Dams and other developmental and non-developmental uses in the basin (e.g., irrigation diversions, agriculture, residential and commercial development, non-native fish introductions, fish harvest) have cumulatively affected water quality and migratory fish species.

4.1.3 Temporal Scope

The temporal scope of our cumulative effects analysis in the NEPA document will include a discussion of past, present, and reasonably foreseeable future actions and their effects on each resource that could be cumulatively affected. Based on the potential term of a new license, the temporal scope will look 30 to 50 years into the future, concentrating on the effect on the resources from reasonably foreseeable future actions. The historical discussion will, by necessity, be limited to the amount of available information for each resource. The quality and quantity of information, however, diminishes as we analyze resources further away in time from the present.

4.2 RESOURCE ISSUES

In this section, we present a preliminary list of environmental issues to be addressed in the NEPA document. We identified these issues, which are listed by resource area, by reviewing the PAD and the Commission's record for the Rock Island Project. This list is not intended to be exhaustive or final, but contains those issues raised to date that could have substantial effects. After the scoping process is complete, we will review the list and determine the appropriate level of analysis needed to address each issue in the NEPA document. We have not identified issues relating to geology and soils, socioeconomics, or aesthetic resources at this time. Those issues identified by an asterisk (*) will be analyzed for both cumulative and site-specific effects.

4.2.1 Aquatic Resources

- Effects of project operation on total dissolved gas levels in the Columbia River.*
- Effects of the project on water temperature and dissolved oxygen in the Columbia River.*
- Effects of the project on aquatic macrophytes in Rock Island Reservoir.
- Effects of project operation and continued implementation of the Rock Island HCP on salmon and steelhead populations.*
- Effects of project operation (e.g., reservoir fluctuations) on juvenile lamprey reservoir survival (e.g., stranding, predation).*

- Effects of project operation on juvenile lamprey downstream passage survival.*
- Effects of the project on adult lamprey upstream passage timing and effectiveness.*
- Effects of the project on subadult and adult bull trout movements, timing, upstream passage effectiveness and fall back, and downstream passage.*
- Effects of project operation on resident fish species stranding in Rock Island Reservoir.
- Effects of project operation on resident fish entrainment and turbine mortality.
- Effects of the project on white sturgeon spawning, rearing, recruitment, movements, and abundance.

4.2.2 Terrestrial Resources

- Effects of continued project operation and maintenance on riparian, littoral, and wetland habitat and associated wildlife.

4.2.3 Threatened and Endangered Species

- Effects of project operation and maintenance on the gray wolf, showy stickseed, Wenatchee Mountains checkermallow, and Upper Columbia River spring Chinook salmon, which are federally listed as endangered; bull trout, Upper Columbia River steelhead, North American wolverine, yellow-billed cuckoo, and Ute ladies' tresses, which are federally listed as threatened; and the monarch butterfly and Wormskiold's northern wormwood, which are candidate species for listing.

4.2.4 Recreation and Land Use

- Effects of continued project operation and maintenance on recreational use and experience in the project area, including the adequacy of existing recreation access, education and interpretive opportunities, and facilities in meeting current and anticipated recreation needs.

- Effects of continued project operation and maintenance on recreational management of natural areas in the project area.

4.2.5 Environmental Justice

- Effects of continued project operation and maintenance on identified environmental justice communities.

4.2.6 Cultural Resources

- Effects of project operation and maintenance activities on historic and archaeological resources that are included or may be eligible for inclusion in the National Register of Historic Places, traditional cultural properties, and access to exercise traditional practices (such as hunting, fishing, and gathering) and treaty rights.

5.0 PROPOSED STUDIES

Depending upon the findings of studies completed by Chelan PUD and the recommendations of the consulted entities, Chelan PUD will consider, and may propose certain other measures to enhance environmental resources affected by the project as part of the proposed action. Chelan PUD's initial study proposals are identified by resource area in table 1. Detailed information on Chelan PUD's initial study proposals can be found in the PAD. Further studies may need to be added to this list based on comments provided to the Commission and Chelan PUD from interested participants, including Indian tribes.

Table 1. Chelan PUD's initial study proposals for the Rock Island Project. (Source: PAD)

Resource Area	Chelan PUD's Proposed Study
Aquatic Resources	Assess the risk of stranding or entrapment for larval pacific lamprey within suitable habitat in the varial zone of the reservoir.
	Assess the risk of stranding or entrapment for subadult bull trout and resident fish species in the reservoir.
	Assess potential effects of dam passage on adult pacific lamprey during upstream migration.

Resource Area	Chelan PUD's Proposed Study
Recreation Resources	Characterize the existing use of the five project recreation sites and identify current and future recreation needs.
Cultural Resources	Conduct an archaeological assessment to compile detailed information of previously recorded archaeological resources and archaeological inventory surveys within the Area of Potential Effect (APE).
	Assess the historic built environment (HBE) within the Rock Island Project APE by compiling detailed information on previously recorded HBE resources and HBE inventory efforts.
Environmental Justice	Engage with environmental justice communities to solicit input on the relicensing process. Assess the potential effects of continued project operation and maintenance and potential climate change impacts to these communities.

6.0 REQUEST FOR INFORMATION AND STUDIES

We are asking federal, state, and local resource agencies, Indian tribes, NGOs, and the public to forward to the Commission any information that will assist us in conducting an accurate and thorough analysis of the project-specific and cumulative effects associated with licensing the Rock Island Project. The types of information requested include, but are not limited to:

- information, quantitative data, or professional opinions that may help define the geographic and temporal scope of the analysis (both site-specific and cumulative effects), and that helps identify significant environmental issues;
- identification of, and information from, any other EA, EIS, or similar environmental study (previous, on-going, or planned) relevant to the proposed licensing of the Rock Island Project;
- existing information and any data that would help characterize environmental conditions and habitats and in the assessment of project effects on environmental resources;

Project No. 943-144

- the identification of any federal, state, or local resource plans, and any future project proposals in the affected resource area (e.g., proposals to construct or operate water treatment facilities, recreation areas, water diversions, timber harvest activities, or fish management programs), along with any implementation schedules);
- documentation that the proposed project would or would not contribute to cumulative adverse or beneficial effects on any resources. Documentation can include, but need not be limited to, how the project would interact with other projects in the area and other developmental activities; study results; resource management policies; and reports from federal and state agencies, local agencies, Indian tribes, NGOs, and the public;
- documentation showing why any resources should be excluded from further study or consideration; and
- study requests by federal and state agencies, local agencies, Indian tribes, NGOs, and the public that would help provide a framework for collecting pertinent information on the resource areas under consideration necessary for the Commission to prepare the NEPA document for the project.

All requests for studies filed with the Commission must meet the criteria found in Appendix A, *Study Plan Criteria*.

The requested information, comments, and study requests should be submitted to the Commission no later than **April 15, 2024**.¹⁰ All filings must clearly identify the following on the first page, as appropriate: **Rock Island Project (P-943-144)**. Scoping comments may be filed electronically via the Internet. See 18 C.F.R. 385.2001(a)(1)(iii) and the instructions on the Commission's website

<https://ferconline.ferc.gov/FEROnline.aspx>. Commenters can submit brief comments up to 6,000 characters, without prior registration, using the eComment system at <https://ferconline.ferc.gov/QuickComment.aspx>. You must include your name and

¹⁰ The Commission's Rules of Practice and Procedure provide that if a filing deadline falls on a Saturday, Sunday, holiday, or other day when the Commission is closed for business, the filing deadline does not end until the close of business on the next business day. 18 C.F.R. § 385.2007(a)(2) (2023). As shown in the Process Plan and Schedule in Appendix B, the scoping comment due date is April 13, 2024, which is a Saturday. Therefore, the comment due date is Monday, April 15, 2024.

Project No. 943-144

contact information at the end of your comments. For assistance, please contact FERC Online Support at FERCOnlineSupport@ferc.gov or toll free at 1-866-208-3676, or for TTY, (202) 502-8659. In lieu of electronic filing, you may submit a paper copy. Submissions sent via the U.S. Postal Service must be addressed to: Debbie-Anne A. Reese, Acting Secretary, Federal Energy Regulatory Commission, 888 First Street NE, Room 1A, Washington, DC 20426. Submissions sent via any other carrier must be addressed to: Debbie-Anne A. Reese, Acting Secretary, Federal Energy Regulatory Commission, 12225 Wilkins Avenue, Rockville, Maryland 20852.

Register online at <https://ferconline.ferc.gov/FERCOOnline.aspx> to be notified via email of new filings and issuances related to this or other pending projects. For assistance, please contact FERC Online Support at FERCOnlineSupport@ferc.gov.

Any questions concerning the scoping meetings, environmental site review, or how to file written comments with the Commission should be directed to Matt Cutlip at (503)-552-2762 or matt.cutlip@ferc.gov. Additional information about the Commission's licensing process and the project may be obtained from the Commission's website, www.ferc.gov.

7.0 CURRENT PROCESSING SCHEDULE

The decision on whether to prepare and EA or EIS will be determined after the license application is filed and we fully understand the scope of effects and measures under consideration. The NEPA document will be distributed to all persons and entities on the Commission's service and mailing lists for the Rock Island Project. The NEPA document will include our recommendations for operating procedures, as well as environmental protection and enhancement measures that should be part of any license issued by the Commission. The comment period will be specified in the notice of availability of the NEPA document.

A copy of the approved process plan, which has a complete list of licensing milestones for the project, including those for developing the license application, is attached as Appendix B to this SD1.

8.0 COMPREHENSIVE PLANS

Section 10(a)(2) of the FPA, 16 U.S.C. section 803(a)(2)(A), requires the Commission to consider the extent to which a project is consistent with federal and state comprehensive plans for improving, developing, or conserving a waterway or waterways

Project No. 943-144

affected by a project. Commission staff has preliminarily identified and reviewed the plans listed below that may be relevant to the Rock Island Project. Agencies are requested to review this list and inform the Commission staff of any changes. If there are other comprehensive plans that should be considered for this list that are not on file with the Commission, or if there are more recent versions of the plans already listed, they can be filed for consideration with the Commission according to 18 CFR § 2.19 of the Commission's regulations. Please follow the instructions for filing a plan at <https://cms.ferc.gov/comprehensive-plans>.

The following is a list of comprehensive plans currently on file with the Commission that may be relevant to the project:

Bureau of Land Management. Forest Service. 1996. Status of the Interior Columbia Basin: Summary of scientific findings. Portland, Oregon. November 1996.

Interagency Committee for Outdoor Recreation. Washington State Comprehensive Outdoor Recreation Planning Document (SCORP): 2002-2007. Olympia, Washington. October 2002.

Interagency Committee for Outdoor Recreation. 1995. Washington State outdoor recreation and habitat: Assessment and policy plan 1995-2001. Tumwater, Washington. November 1995.

Interagency Committee for Outdoor Recreation. 1991. Washington State trails plan: policy and action document. Tumwater, Washington. June 1991.

National Marine Fisheries Service. 2002. Anadromous Fish Agreement and Habitat Conservation Plan: The Wells Hydroelectric Project (FERC Project No. 2149). Portland, Oregon. March 26, 2002.

National Marine Fisheries Service. 2008. Mainstem Columbia River Hydropower Projects Recovery Plan Module. Portland, Oregon. September 2008.

National Marine Fisheries Service. 2008. Recovery Plan for Southern Resident Killer Whales. Seattle, Washington. January 2008.

National Marine Fisheries Service. Pacific Fishery Management Council. 1978. Fishery management plan for commercial and recreational salmon fisheries off the coasts of Washington, Oregon, and California commencing in 1978. March 1978.

Project No. 943-144

National Park Service. 1993. The Nationwide Rivers Inventory. Department of the Interior, Washington, D.C. 1993.

Northwest Power and Conservation Council. 1988. Protected areas amendments and response to comments. Portland, Oregon. Council Document 88-22. September 14, 1988.

Northwest Power and Conservation Council. 2014. Columbia River Basin Fish and Wildlife Program. Portland, Oregon. Council Document 2014-12. October 2014.

Northwest Power and Conservation Council 2020. 2020 Addendum to the 2014 Columbia River Basin Fish and Wildlife Program. Portland, Oregon. Council Document 2020-9. October 2020.

Northwest Power and Conservation Council. 2022. The 2021 Northwest Power Plan. Portland, Oregon. Council Document 2022-03. February 2022.

Pacific Fishery Management Council. 1988. Eighth amendment to the fishery management plan for commercial and recreational salmon fisheries off the coasts of Washington, Oregon, and California commencing in 1978. Portland, Oregon. January 1988.

Pacific Fishery Management Council. 2014. Appendix A to the Pacific Coast salmon fishery management plan, as modified by amendment 18 to the Pacific Coast salmon plan: identification and description of essential fish habitat, adverse impacts, and recommended conservation measures for salmon. Portland, Oregon. September 2014.

State of Idaho. State of Oregon. State of Washington. Confederated Tribes of the Warm Springs Reservation of Oregon. Confederated Tribes of the Umatilla Indian Reservation. Nez Perce Tribe. Confederated Tribes and Bands of the Yakima Indian Nation. 1987. Settlement Agreement pursuant to the September 1, 1983, Order of the U.S. District Court for the District of Oregon in Case No. 68-5113. Columbia River fish management plan. Portland, Oregon. November 1987.

U.S. Fish and Wildlife Service. n.d. Fisheries USA: the recreational fisheries policy of the U.S. Fish and Wildlife Service. Washington, D.C.

Project No. 943-144

U.S. Fish and Wildlife Service. Canadian Wildlife Service. 1986. North American waterfowl management plan. Department of the Interior. Environment Canada. May 1986.

Upper Columbia Salmon Recovery Board. 2007. Upper Columbia Spring Chinook Salmon and Steelhead Recovery Plan. Okanogan, Washington. August 2007.

Washington Department of Community Development. Office of Archaeology and Historic Preservation. 1987. Resource protection planning process - Paleoindian study unit. Olympia, Washington.

Washington Department of Community Development. Office of Archaeology and Historic Preservation. 1987. Resource protection planning process - mid-Columbia study unit. Olympia, Washington.

Washington Department of Community Development. Office of Archaeology and Historic Preservation. 1987. A resource protection planning process identification component for the eastern Washington protohistoric study unit. Olympia, Washington.

Washington Department of Community Development. Office of Archaeology and Historic Preservation. 1989. Resource protection planning process - study unit transportation.

Washington Department of Ecology. 1982. Wenatchee River Basin instream resources protection program. Olympia, Washington. December 1982.

Washington Department of Ecology. 1994. State wetlands integration strategy. Olympia, Washington. December 1994.

Washington Department of Ecology. 1986. Application of shoreline management to hydroelectric developments. Olympia, Washington. September 1986.

Washington Department of Ecology. 1982. Instream resource protection program for the main stem Columbia River in Washington State. Olympia, Washington.

Washington Department of Fisheries. 1987. Hydroelectric project assessment guidelines. Olympia, Washington.

Project No. 943-144

Washington Department of Fish and Wildlife. 1997. Management recommendations for Washington's priority habitats: Riparian. Olympia, Washington. December 1997.

Washington Department of Fish and Wildlife. 2004. Management recommendations for Washington's priority species, Volume IV: Birds. Olympia, Washington. May 2004.

Washington Department of Fish and Wildlife. 2005. Washington's comprehensive wildlife conservation strategy. Olympia, Washington. September 19, 2005.

Washington Department of Game. 1987. Strategies for Washington's wildlife. Olympia, Washington. May 1987.

Washington Department of Natural Resources. 1987. State of Washington natural heritage plan. Olympia, Washington.

Washington Department of Natural Resources. 1997. Final habitat conservation plan. Olympia, Washington. September 1997.

Washington State Energy Office. 1992. Washington State hydropower development/resource protection plan. Olympia, Washington. December 1992.

Washington State Parks and Recreation Commission. 1988. Washington State scenic river assessment. Olympia, Washington. September 1988.

Washington State Parks and Recreation Commission. 1988. Scenic rivers program - report. Olympia, Washington. January 29, 1988.

9.0 MAILING LISTS

The list below is the Commission's official mailing list for the Rock Island Project. If you want to receive future mailings for this proceeding and are not included in the list below, please send your request by email to FERCOnlineSupport@ferc.gov. In lieu of an email request, you may submit a paper request. Submissions sent via the U.S. Postal Service must be addressed to: Debbie-Anne A. Reese, Acting Secretary, Federal Energy Regulatory Commission, 888 First Street NE, Room 1A, Washington, DC 20426. Submissions sent via any other carrier must be addressed to: Debbie-Anne A. Reese, Acting Secretary, Federal Energy Regulatory Commission, 12225 Wilkins Avenue,

Project No. 943-144

Rockville, Maryland 20852. All written or emailed requests to be added to the mailing lists must clearly identify the following: **Rock Island Project (P-943-144)**. You may use the same methods if requesting removal from the mailing list below.

Register online at <https://ferconline.ferc.gov/FERCOOnline.aspx> to be notified via email of new filings and issuances related to these projects or other pending projects. For assistance, please contact FERC Online Support at FERCOOnlineSupport@ferc.gov or toll free at 1-866-208-3676, or for TTY, (202) 502-8659.

Official Mailing List for the Rock Island Project

Janel Ulrich Hydro Licensing Manager PO Box 1231 Wenatchee, WA 98807	Meaghan Connell Senior Licensing Compliance 327 N. Wenatchee Avenue Wenatchee, WA 98807
Martha K Whiteman Senior Licensing Compliance Sp PO Box 1231 Wenatchee, WA 98807	Laura Clark 327 N Wenatchee Avenue Wenatchee, WA 98801
Margaret H Claybour Attorney Davis Write Tremaine LLP 1 Thomas Cir, NW Suite 700 Washington, DC 20005	Erik Wahlquist General Counsel Public Utility District No. 1 of Chelan County, Washington 327 N. Wenatchee, WA 98801
Kate Taylor Licensing & Compliance Special 327 N Wenatchee Ave Wenatchee, WA 98801	Shane Arthur Bickford Assistant Manager Public Utility District No. 1 of Douglas County 1151 Valley Mall Parkway East Wenatchee, WA 98802
Gary Ivory General Manager Public Utility District No. 1 of Douglas County 1151 Valley Mall Parkway East Wenatchee, WA 98802	Markham Quehrn Attorney Perkins Coie LLP Suite 700 10885 N.E. Fourth St Bellevue, WA 98804-5579
Michael Spear Director U.S. Fish & Wildlife Service 2600 S.E. 98th Avenue, Suite 100 Portland, OREGON 97266	FERC Coordinator Wenatchee National Forest 215 Melody Ln Wenatchee, WA 98801-5933

Project No. 943-144

<p>Jeff Marti Washington State Department of Ecology PO Box 47600 Olympia, WA 98504-7600</p>	<p>Phyllis Barney Assistant Attorney General Washington Office of Attorney General 2425 Bristol Court SW, Second Floor P.O. Box 40117 (Olympia, WA 98504-0117) Olympia, WA 98502</p>
<p>Patrick M. Verhey Fish & Wildlife Biologist Washington State Dept of Fish & Wildlife 1550 Alder St NW Ephrata, WA 98823</p>	<p>Public Lands and Conservation Div FWP 1125 Washington Street SE P.O. Box 40100 Olympia, WA 98504</p>
<p>Karen Gustin Superintendent OLYMPIC NATIONAL PARK 600 East Park Avenue Port Angeles, WA 98362</p>	<p>POWER SYSTEM SERVICES 825 NE Multnomah St Portland, OR 97232-2135</p>
<p>Ritchie J Graves Fishery Biologist NOAA National Marine Fisheries Service 1201 NE Lloyd Blvd Suite 1100 Portland, OR 97232</p>	<p>Christopher Fontecchio Attorney-Advisor NOAA 7600 Sand Point Way NE Seattle, WA 98115</p>
<p>Pat Kelleher 6530 Wilson Creek Rd Ellensburg, WA 98926</p>	<p>Neeka M Somday Legislative Assistant 21 Colville Street Nespelem, WA 99155</p>
<p>Kevin Richard Colburn National Stewardship Director American Whitewater PO Box 1540 Cullowhee, NC 28723</p>	<p>DONALD E KEMPF ENVIR. SPEC. Stillaguamish Tribe of Washington PO Box 277 Arlington, WA 98223-0277</p>

Project No. 943-144

Lee Van Tussenbrook Manager Washington State Dept of Fish & WildLife 2108 Grand Blvd Vancouver, WA 98661-4624	Electric Section SPECIALIST Washington Utilities and Transportation Commission PO Box 47250 Olympia, WA 98504-7250
Maria Cantwell Senator U.S. Senate 511 Hart Senate Office Bldg RTS-return to sender Washington, DC 20510	Stephen Bredthauer Technical Review Program Manag U.S. Army Corps of Engineers, NW Division P. O. Box 2870 Portland, OR 97208-2870
REGIONAL ADMINISTRATOR U.S. Environmental Protection Agency Portland, OR 97205-3331	

APPENDIX A
STUDY PLAN CRITERIA
18 CFR Section 5.9(b)

Any information or study request must contain the following:

1. Describe the goals and objectives of each study proposal and the information to be obtained;
2. If applicable, explain the relevant resource management goals of the agencies or Indian tribes with jurisdiction over the resource to be studied;
3. If the requester is not a resource agency, explain any relevant public interest considerations in regard to the proposed study;
4. Describe existing information concerning the subject of the study proposal, and the need for additional information;
5. Explain any nexus between project operations and effects (direct, indirect, and/or cumulative) on the resource to be studied, and how the study results would inform the development of license requirements;
6. Explain how any proposed study methodology (including any preferred data collection and analysis techniques, or objectively quantified information, and a schedule including appropriate field season(s) and the duration) is consistent with generally accepted practice in the scientific community or, as appropriate, considers relevant tribal values and knowledge; and
7. Describe considerations of level of effort and cost, as applicable, and why proposed alternative studies would not be sufficient to meet the stated information needs.

APPENDIX B PROCESS PLAN AND SCHEDULE

Shaded milestones are unnecessary if there are no study disputes. If the due date falls on a weekend or holiday, the due date is the following business day. Early filings or issuances will not result in changes to these deadlines.

Responsible Party	Pre-Filing Milestone	Date	FERC Regulation
Idaho Falls Power	NOI/PAD and Request to Utilize the Integrated Licensing Process filed	12/15/23	5.5, 5.6
FERC	Initiate Tribal Consultation	1/14/24	5.7
FERC	Issue Notice of Commencement of Proceeding and Scoping Document 1	2/13/24	5.8
FERC	Scoping Meetings and Project Site Visit	3/14/24	5.8(b)(viii)
All Stakeholders	File Comments on PAD/Scoping Document 1 and Study Requests	4/13/24	5.9
FERC	Issue Scoping Document 2 (if necessary)	5/28/24	5.10
Idaho Falls Power	File Proposed Study Plan	5/28/24	5.11(a)
All Stakeholders	Proposed Study Plan Meeting	6/27/24	5.11(e)
All Stakeholders	File Comments on Proposed Study Plan	8/26/24	5.12
Idaho Falls Power	File Revised Study Plan	9/25/24	5.13(a)
All Stakeholders	File Comments on Revised Study Plan	10/10/24	5.13(b)
FERC	Issue Director's Study Plan Determination	10/25/24	5.13(c)
Mandatory Conditioning Agencies	File Any Study Disputes	11/14/24	5.14(a)

Responsible Party	Pre-Filing Milestone	Date	FERC Regulation
Dispute Panel	Select Third Dispute Resolution Panel Member	11/29/24	5.14(d)(3)
Dispute Panel	Convene Dispute Resolution Panel	12/4/24	5.14(d)
Idaho Falls Power	File Comments on Study Disputes	12/9/24	5.14(i)
Dispute Panel	Dispute Resolution Panel Technical Conference	12/14/24	5.14(j)
Dispute Panel	Issue Dispute Resolution Panel Findings	1/3/25	5.14(k)
FERC	Issue Director's Study Dispute Determination	1/23/25	5.14(l)
Idaho Falls Power	First Study Season	Spring/Summer 2025	5.15(a)
Idaho Falls Power	File Initial Study Report	10/25/25	5.15(c)(1)
All Stakeholders	Initial Study Report Meeting	11/9/25	5.15(c)(2)
Idaho Falls Power	File Initial Study Report Meeting Summary	11/24/25	5.15(c)(3)
All Stakeholders	File Disagreements/Requests to Amend Study Plan	12/24/25	5.15(c)(4)
All Stakeholders	File Responses to Disagreements/Amendment Requests	1/23/26	5.15(c)(5)
FERC	Issue Director's Determination on Disagreements/Amendments	2/22/26	5.15(c)(6)
Idaho Falls Power	Second Study Season (if needed)	Spring/Summer 2026	5.15(a)
Idaho Falls Power	File Updated Study Report	10/25/26	5.15(f)
All Stakeholders	Updated Study Report Meeting	11/9/26	5.15(f)
Idaho Falls Power	File Updated Study Report Meeting Summary	11/24/26	5.15(f)

Responsible Party	Pre-Filing Milestone	Date	FERC Regulation
All Stakeholders	File Disagreements/Requests to Amend Study Plan	12/24/26	5.15(f)
All Stakeholders	File Responses to Disagreements/Amendment Requests	1/23/27	5.15(f)
FERC	Issue Director's Determination on Disagreements/Amendments	2/22/27	5.15(f)
Idaho Falls Power	File Preliminary Licensing Proposal (or Draft License Application)	9/3/26	5.16(a)-(c)
All Stakeholders	File Comments on Preliminary Licensing Proposal (or Draft License Application)	12/2/26	5.16(e)
Idaho Falls Power	File Final License Application	1/31/27	5.17
Idaho Falls Power	Issue Public Notice of Final License Application Filing	2/14/27	5.17(d)(2)